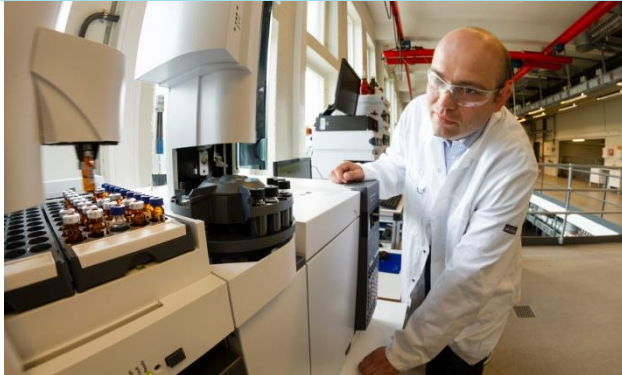


# SINTEF's MS-INSTRUMENT PLATFORM OFFERS UNIQUE POSSIBILITIES FOR ADVANCED RESEARCH BASED ANALYSES

GC-MS identification of organic compounds



FFF - Field Flow Fractionation  
Characterization of nanoparticles, polymers, asphaltenes and aggregates



**SINTEF HAS INVESTED >70 MNOK IN ADVANCED MS INSTRUMENTS**



LC-MS-QQQ tracer analysis (ppq sensitivity). Detects less than 1 mg of oil/water tracer in an international swimming pool – filled with oil!

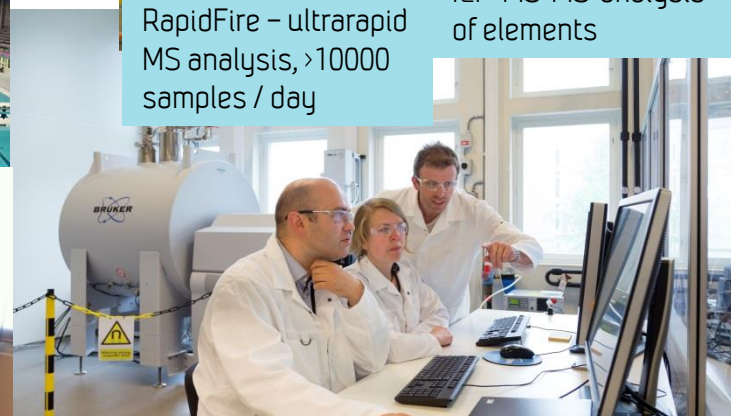
Dept. of Mass Spectrometry (MS) currently employs 18 researchers and engineers with long experience in MS-analyses (biotech, drugs, forensics, carbon capture, oil)

**ION MOBILITY - A NEW POSSIBILITY**



RapidFire – ultrarapid MS analysis, >10000 samples / day

ICP-MS-MS-analysis of elements



FT-ICR-MS ultra high resolution MS-identification. (Only instrument in Scandinavia, ca. 20 WW, of this class)